



# Acronis Cyber Cloud Migration from VMware

Acronis Cyber Cloud Migration from  
VMware

January 27, 2023

Virtuozzo International GmbH

Vordergasse 59

8200 Schaffhausen

Switzerland

Tel: + 41 52 632 0411

Fax: + 41 52 672 2010

<https://virtuozzo.com>

Copyright ©2016-2023 Virtuozzo International GmbH. All rights reserved.

This product is protected by United States and international copyright laws. The product's underlying technology, patents, and trademarks are listed at <https://www.virtuozzo.com/legal.html>.

Microsoft, Windows, Windows Server, Windows NT, Windows Vista, and MS-DOS are registered trademarks of Microsoft Corporation.

Apple, Mac, the Mac logo, Mac OS, iPad, iPhone, iPod touch, FaceTime HD camera and iSight are trademarks of Apple Inc., registered in the US and other countries.

Linux is a registered trademark of Linus Torvalds. All other marks and names mentioned herein may be trademarks of their respective owners.

# Contents

- 1. About This Guide . . . . . 1**
- 2. Deploying the Acronis Agent for VMware from an OVF Template . . . . . 2**
  - 2.1 Creating an Appliance with the Acronis Agent for VMware . . . . . 3
  - 2.2 Configuring the Acronis Agent for VMware . . . . . 11
- 3. Deploying the Agent for Virtuozzo Hybrid Infrastructure from a QCOW2 Template . . . . . 18**
  - 3.1 Configuring Networks in Virtuozzo Hybrid Infrastructure . . . . . 19
  - 3.2 Configuring User Accounts in Virtuozzo Hybrid Infrastructure . . . . . 20
  - 3.3 Creating an Appliance with the Agent for Virtuozzo Hybrid Infrastructure . . . . . 20
  - 3.4 Configuring the Agent for Virtuozzo Hybrid Infrastructure . . . . . 24
- 4. Migrating Virtual Machines . . . . . 29**
  - 4.1 Backing Up Virtual Machines . . . . . 29
  - 4.2 Recovering Virtual Machines . . . . . 32

## CHAPTER 1

# About This Guide

This guide explains how to migrate virtual machines using Acronis Cyber Cloud.

You will need to log in to the portal at <https://cloud.acronis.com> with your account.

## CHAPTER 2

# Deploying the Acronis Agent for VMware from an OVF Template

The migration process will be divided in to four sections:

Before you proceed to deploy one or more agents, take note of the following:

- **Agent system requirements.**

By default, a virtual appliance is assigned 4 GB of RAM and 2 vCPUs, which is optimal and sufficient for most operations. It is recommended, however, to let an agent have 8 GB of RAM and 4 vCPUs to improve backup performance if the backup traffic exceeds 100 MB/s (in 10 Gbps networks, for example).

As for storage, appliance virtual disks occupy no more than 6 GB. Thick or thin disk format does not matter as it does not affect the appliance performance.

- **The number of agents.**

Even though one virtual appliance can protect the entire vSphere environment, the best practice is to deploy one virtual appliance per vSphere cluster (or per host, if there are no clusters). This makes for faster backups because the appliance can attach the backed-up disks by using the HotAdd transport and therefore direct the backup traffic from one local disk to another.

You can use both the virtual appliance and Acronis Agent for VMware for Windows at the same time, as long as they are connected to the same vCenter Server or different ESXi hosts. Avoid connecting one agent to an ESXi directly and another to the vCenter Server which manages this ESXi.

It is not recommended to use locally attached storage (i.e. storing backups on virtual disks added to the virtual appliance) if you have more than one agent.

- **Disable automatic DRS for the agents.**

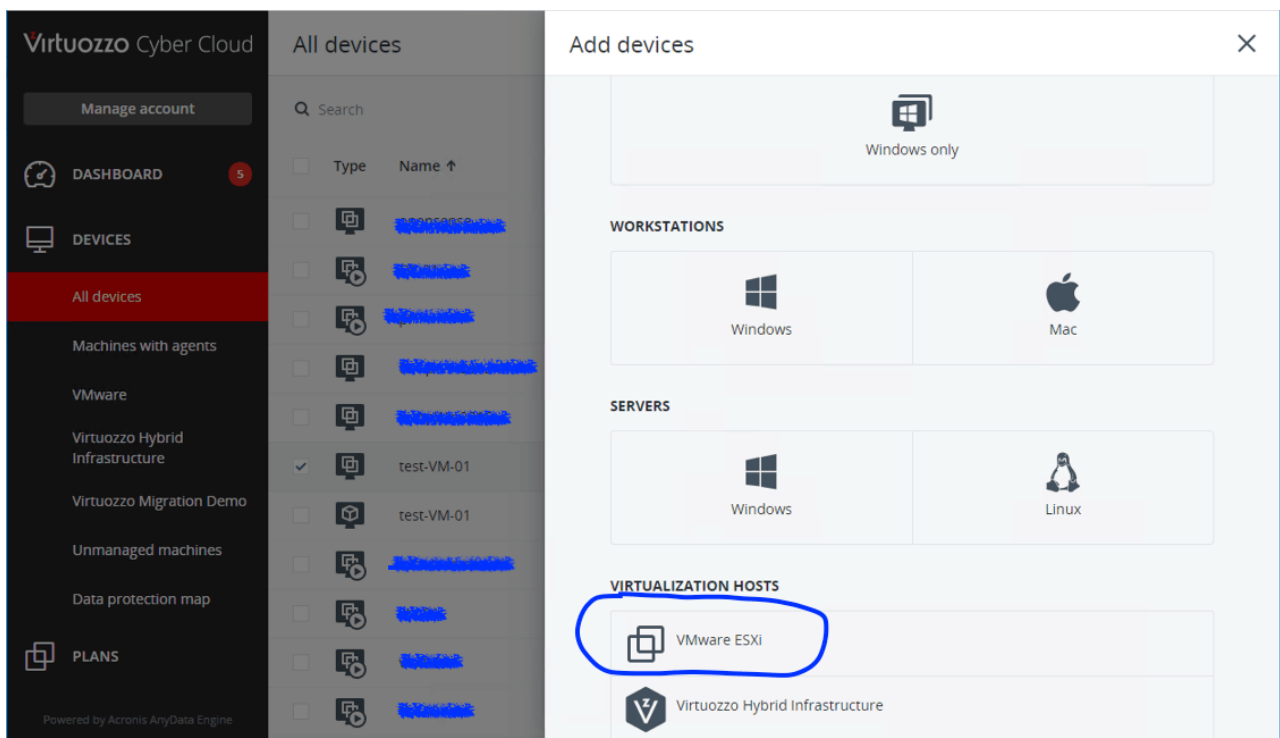
If the virtual appliance is deployed to a vSphere cluster, be sure to disable automatic vMotion for it. In the cluster DRS settings, enable individual virtual machine automation levels, and then set **Automation** level for the virtual appliance to **Disabled**.

## 2.1 Creating an Appliance with the Acronis Agent for VMware

To create an appliance with the Acronis Agent for VMware from an OVF template, do the following:

1. In Acronis Cyber Cloud, click **All devices** > **Add** > **VMware ESXi** > **Virtual Appliance (OVF)**.

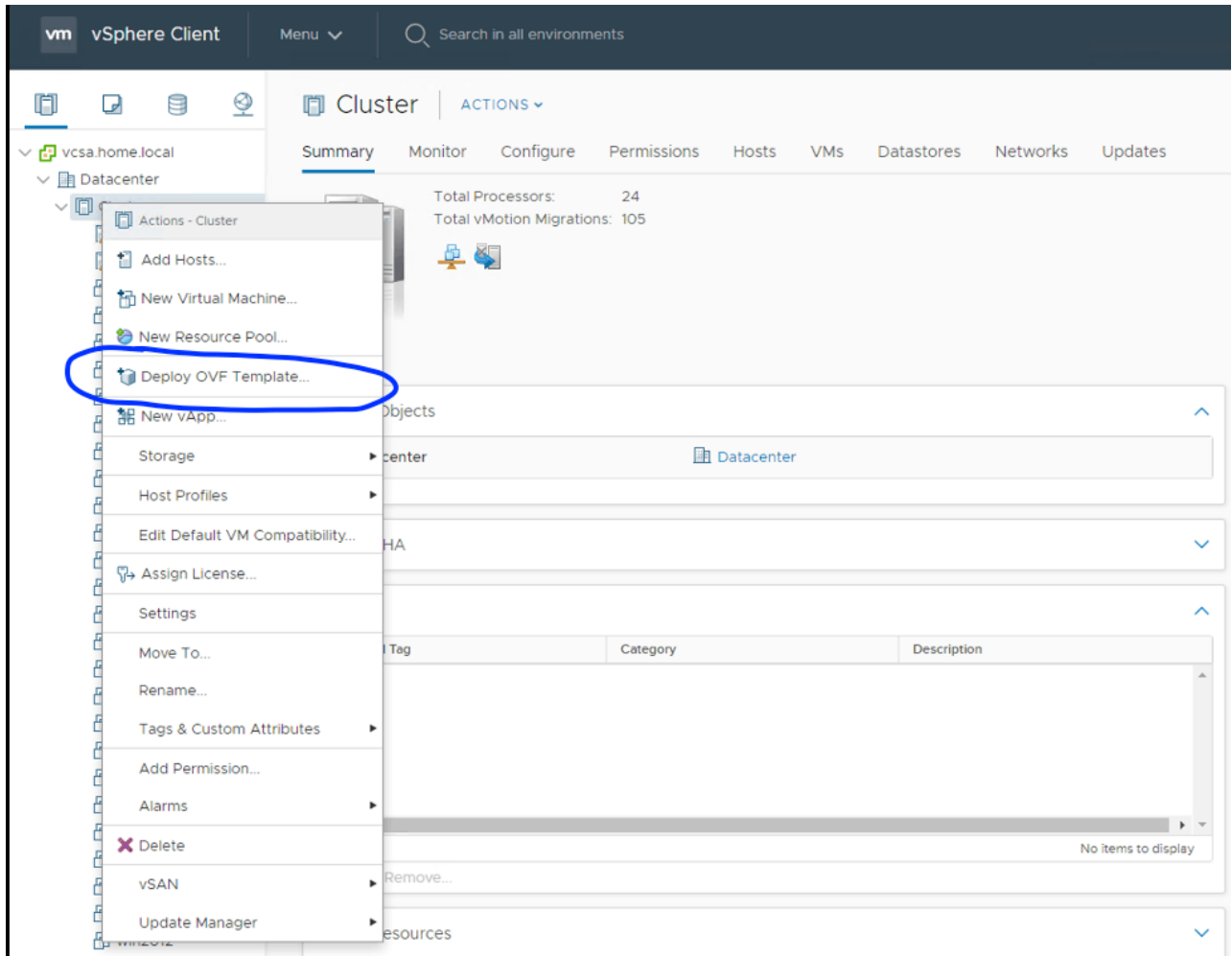
The archived template will be downloaded to your machine.



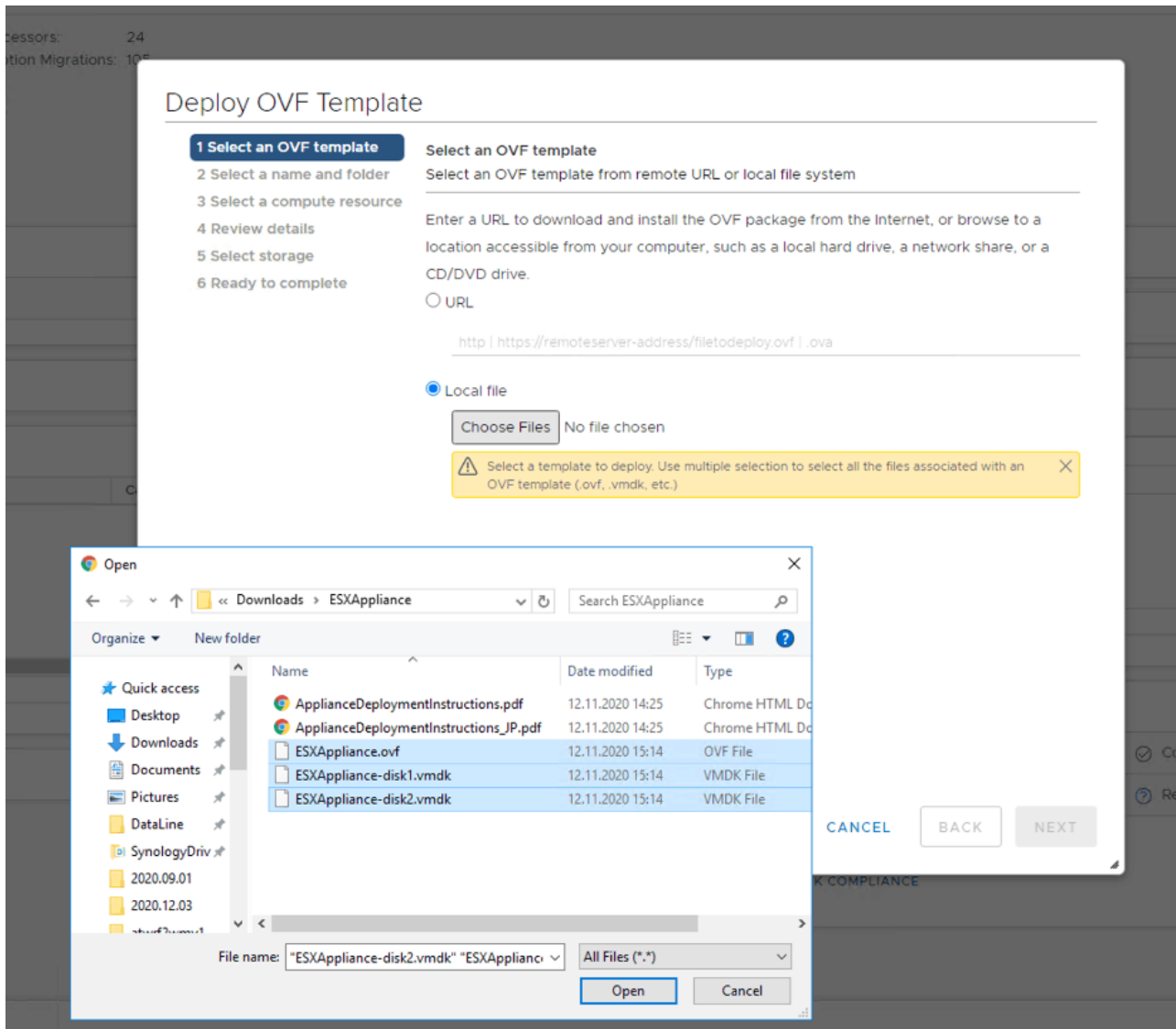
2. Unpack the archive. It will contain an OVF file and two VMDK files.
3. Make sure that these files can be accessed from the machine running the vSphere Client.

4. Start the vSphere Client and log on to the vCenter Server.
5. In the vSphere Client, click **Deploy OVF Template** in the **Actions** menu.

The corresponding wizard will open.



6. On wizard step #1, select all three files of the template.



7. On wizard step #2, type in a name and choose a location for the appliance.



Deploy OVF Template

✓ 1 Select an OVF template  
2 Select a name and folder  
3 Select a compute resource  
4 Review details  
5 Select storage  
6 Ready to complete

Select a name and folder  
Specify a unique name and target location

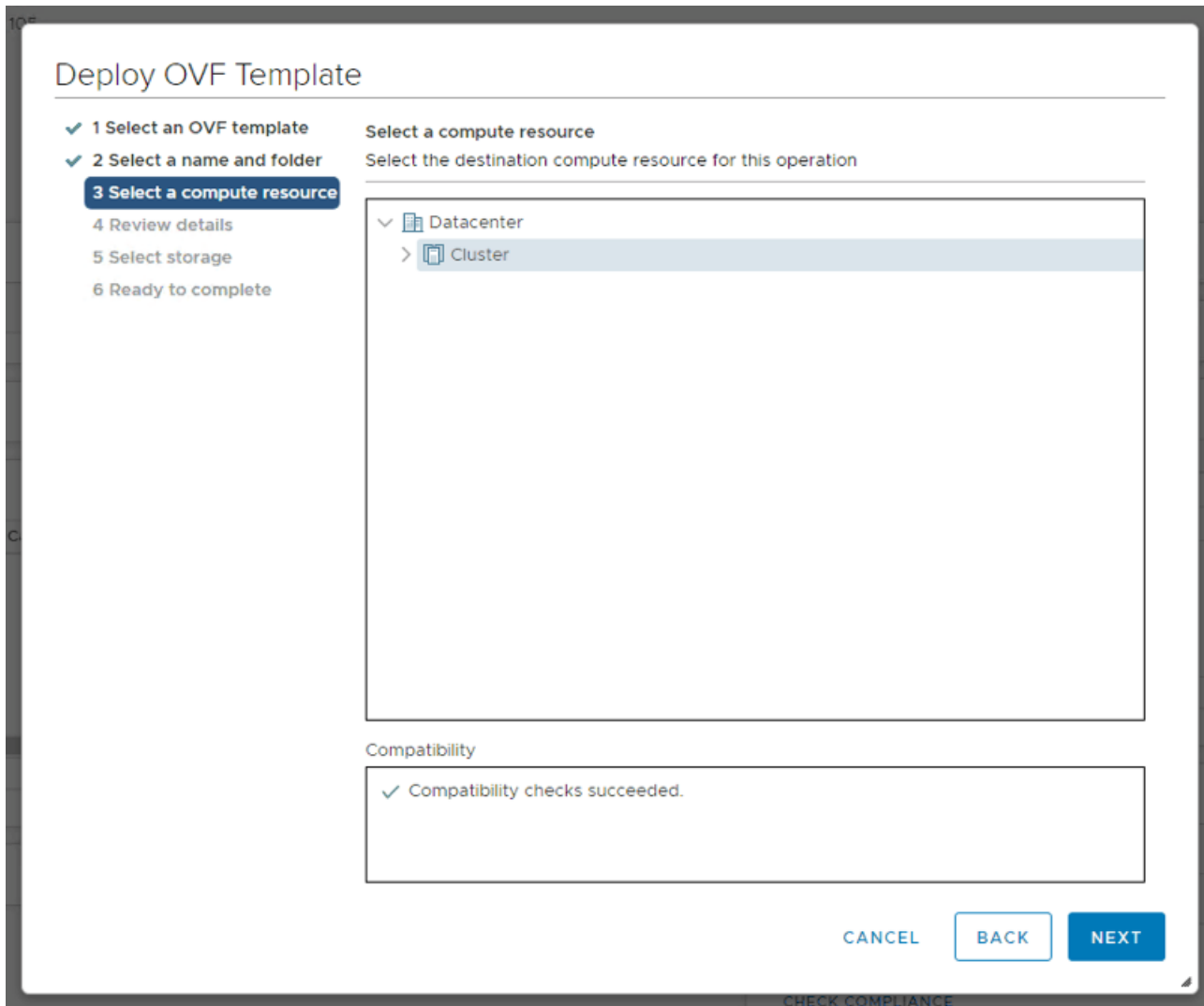
Virtual machine name: ESXAppliance

Select a location for the virtual machine.

- ✓ vcsa.home.local
  - > Datacenter

CANCEL BACK NEXT

8. On wizard step #3, choose a destination compute resource.



9. On wizard step #4, review the template details.

### Deploy OVF Template

- ✓ 1 Select an OVF template
- ✓ 2 Select a name and folder
- ✓ 3 Select a compute resource
- 4 Review details**
- 5 Select storage
- 6 Select networks
- 7 Ready to complete

#### Review details

Verify the template details.

⚠ The OVF package contains advanced configuration options, which might pose a security risk. Review the advanced configuration options below. Click next to accept the advanced configuration options.

Publisher	No certificate present
Description	{AB53A0F1-AD54-480f-80BB-FC72DC41DF53}
Download size	411.2 MB
Size on disk	800.7 MB (thin provisioned)
	9.0 GB (thick provisioned)
Extra configuration	disk.EnableUUID = TRUE virtualHW.productCompatibility = hosted

CANCEL

BACK

NEXT

10. On wizard step #5, select storage for the appliance. If possible, select a shared datastore. The disk format, thick or thin, does not matter as it does not affect the appliance performance.

## Deploy OVF Template

- ✓ 1 Select an OVF template
- ✓ 2 Select a name and folder
- ✓ 3 Select a compute resource
- ✓ 4 Review details
- 5 Select storage**
- 6 Select networks
- 7 Ready to complete

**Select storage**  
Select the storage for the configuration and disk files

☐ Encrypt this virtual machine (Requires Key Management Server)

Select virtual disk format: **Thin Provision** ▼

VM Storage Policy: **Datastore Default** ▼

Name	Capacity	Provisioned	Free	Type
vm	34.91 TB	24.72 TB	22.28 TB	NF
vol2	911.3 GB	688.93 GB	505.92 GB	NF
vol3	911.3 GB	517.13 GB	590.12 GB	NF

Compatibility

✓ Compatibility checks succeeded.

CANCEL BACK NEXT

11. On wizard step #6, select networks for the appliance. The agent will require an Internet connection to register in the cloud.

### Deploy OVF Template

- ✓ 1 Select an OVF template
- ✓ 2 Select a name and folder
- ✓ 3 Select a compute resource
- ✓ 4 Review details
- ✓ 5 Select storage
- 6 Select networks**
- 7 Ready to complete

**Select networks**  
Select a destination network for each source network.

Source Network	Destination Network
bridged	Servers
1 items	

**IP Allocation Settings**

IP allocation: Static - Manual

IP protocol: IPv4

CANCEL BACK NEXT

12. On wizard step #7, click **Finish** to create the appliance.

Deploy OVF Template

✓ 1 Select an OVF template  
✓ 2 Select a name and folder  
✓ 3 Select a compute resource  
✓ 4 Review details  
✓ 5 Select storage  
✓ 6 Select networks  
**7 Ready to complete**

**Ready to complete**  
Click Finish to start creation.

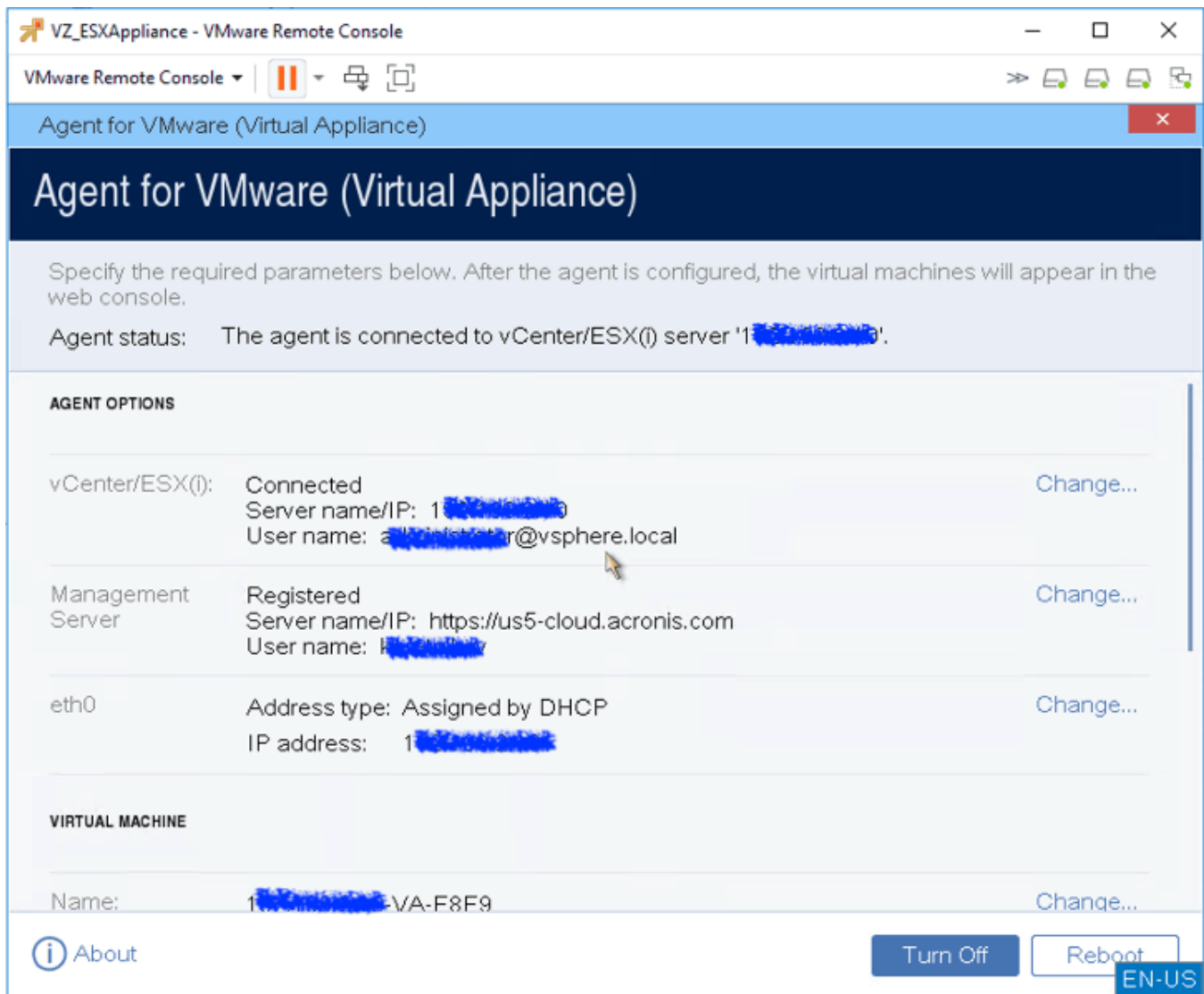
Provisioning type	Deploy from template
Name	ESXAppliance
Template name	ESXAppliance
Download size	411.2 MB
Size on disk	800.7 MB
Folder	Datacenter
Resource	Cluster
Storage mapping	1
All disks	Datastore: vm; Format: Thin provision
Network mapping	1
bridged	Servers
IP allocation settings	
IP protocol	IPV4
IP allocation	Static - Manual

CANCEL BACK FINISH

## 2.2 Configuring the Acronis Agent for VMware

After creating the agent appliance, start it. In the vSphere Client, open **Inventory**, right-click the appliance name, and then select **Power > Power On**. Select the **Console** tab.

The console to the appliance virtual machine will open.



Configure the agent as follows:

1. (Optional) Configure a proxy server if you have one in your network:
  - 1.1. Start the command shell by pressing CTRL+SHIFT+F2 while in the virtual appliance UI.
  - 1.2. Edit the following section in the file `/etc/Acronis/Global.config`:

```
<key name="HttpProxy">
<value name="Enabled" type="Tdwor">"1"</value>
<value name="Host" type="TString">"ADDRESS"</value>
<value name="Port" type="Tdwor">"PORT"</value>
<value name="Login" type="TString">"LOGIN"</value>
<value name="Password" type="TString">"PASSWORD"</value>
</key>
```

If the section is missing, copy and paste it to the file inside the `<registry name="Global">...</registry>` tag.

1.3. Replace ADDRESS with your proxy server host name or IP address and PORT with the port number.

1.4. If your proxy server requires authentication, replace LOGIN and PASSWORD with the proxy server credentials. Otherwise, delete these lines.

1.5. Locate (or create) the env section in the file `/opt/acronis/etc/aakore.yaml` and add the following lines to it:

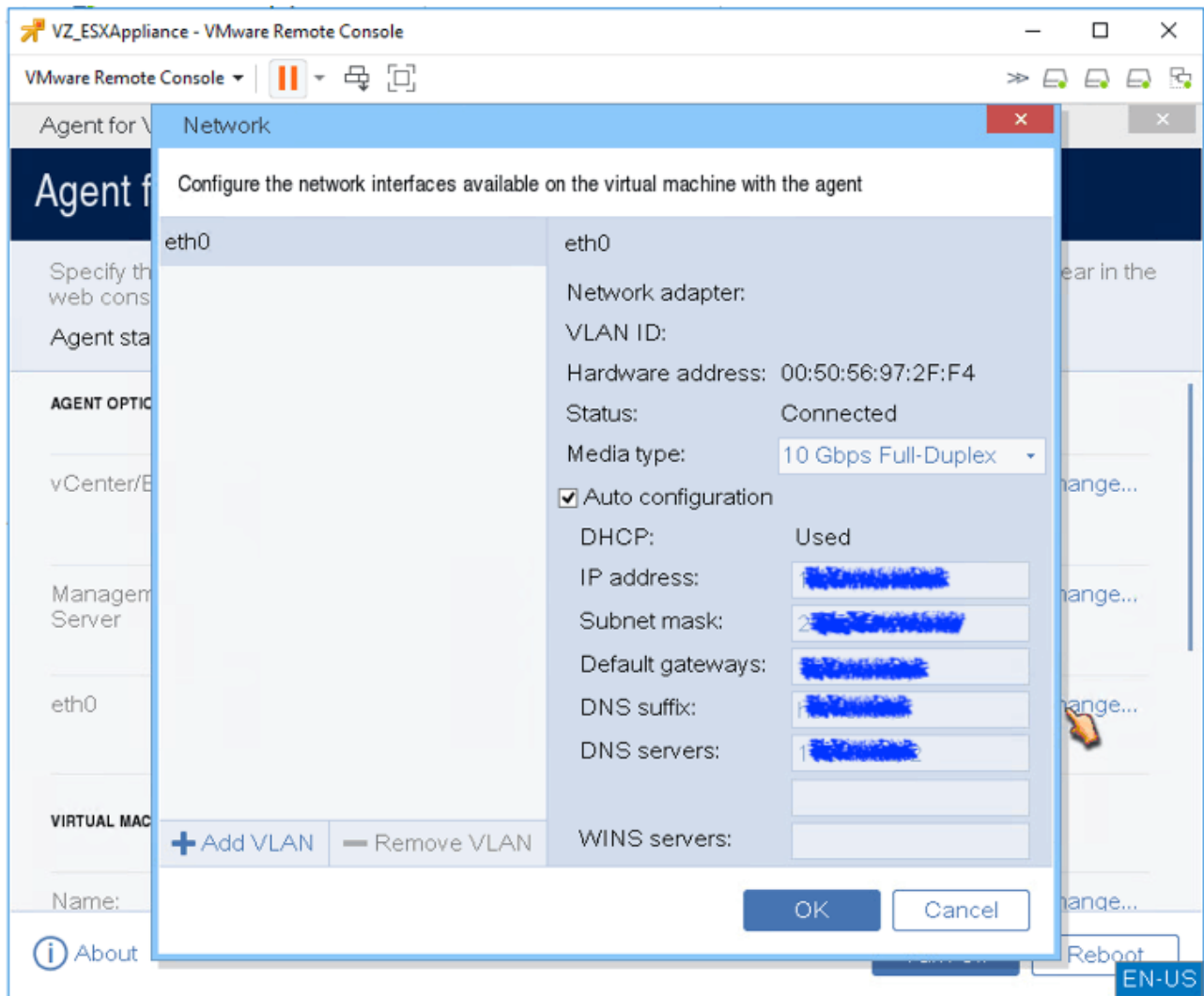
```
http-proxy: LOGIN:PASSWORD@ADDRESS:PORT
https-proxy: LOGIN:PASSWORD@ADDRESS:PORT
```

1.6. Replace LOGIN and PASSWORD with the proxy server credentials, and ADDRESS:PORT with the address and port number of the proxy server.

1.7. Reboot the appliance with `reboot`.

2. The agent's network connection will be configured automatically via DHCP. To change the default configuration, under **AGENT OPTIONS**, in **eth0**, click **Change** and specify the desired network settings.



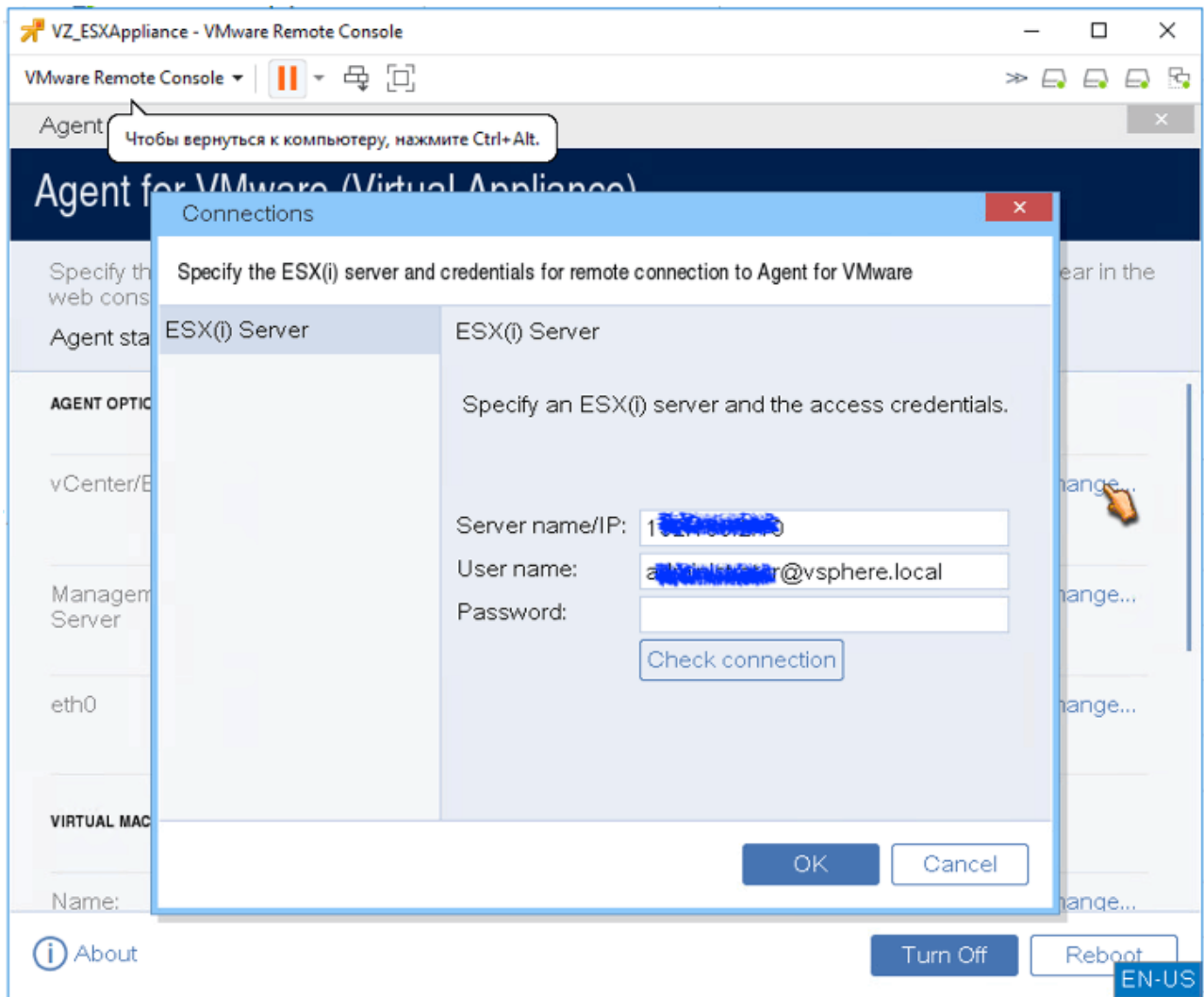


- Under **AGENT OPTIONS**, in **vCenter/ESX(i)**, click **Change** and specify the vCenter Server name or IP address. The agent will be able to back up and recover any virtual machines managed by the vCenter Server.

If you do not use a vCenter Server, specify the name or IP address of the ESXi host whose virtual machines you want to back up and recover. Normally, backups run faster when the agent backs up virtual machines located on its own host.

Specify the credentials that the agent will use to connect to the vCenter Server or ESXi. It is recommended to use an account that has the Administrator role assigned. Otherwise, provide an account with the necessary privileges on the vCenter Server or ESXi.

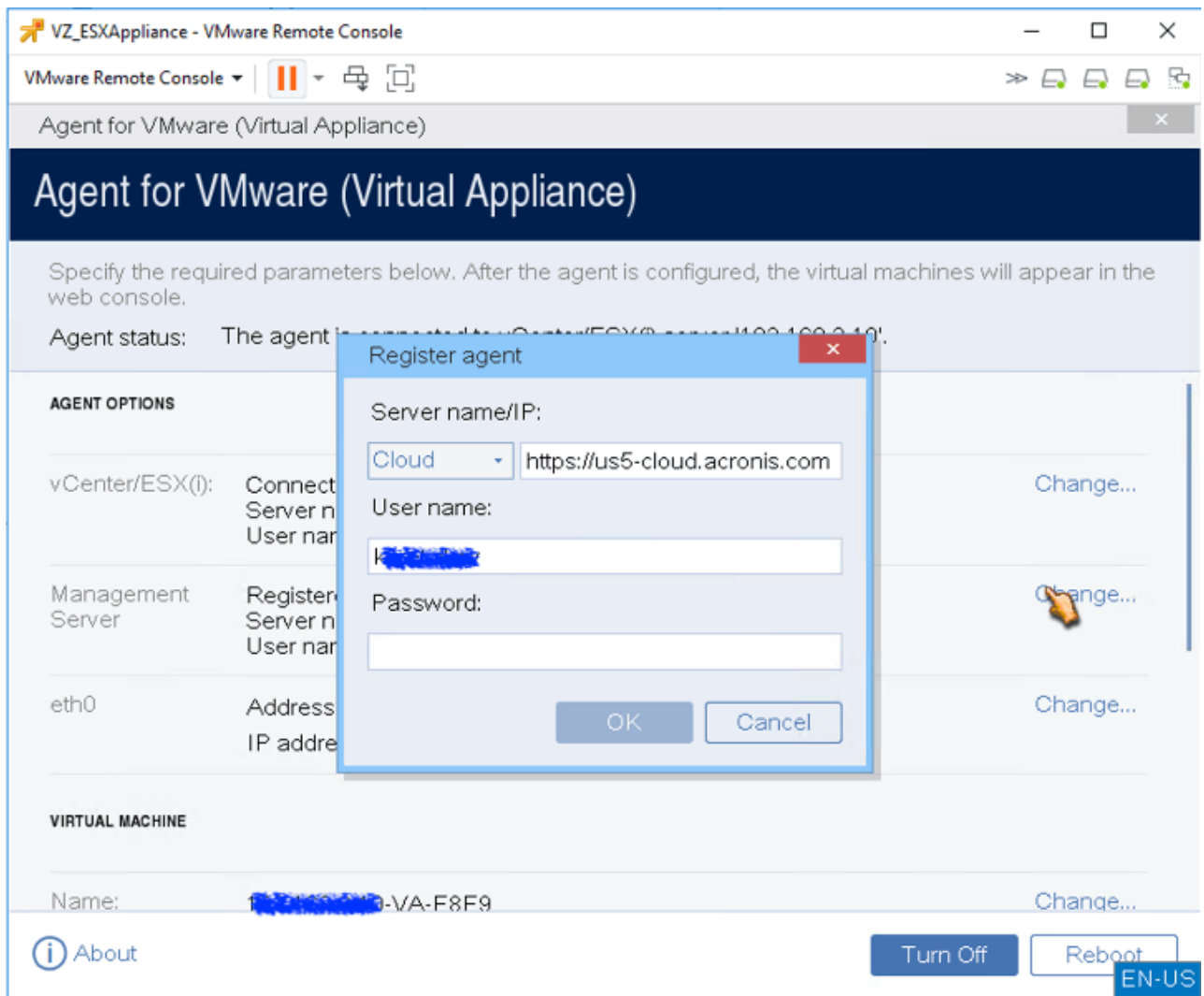
Click **Check connection** to ensure the access credentials are correct.



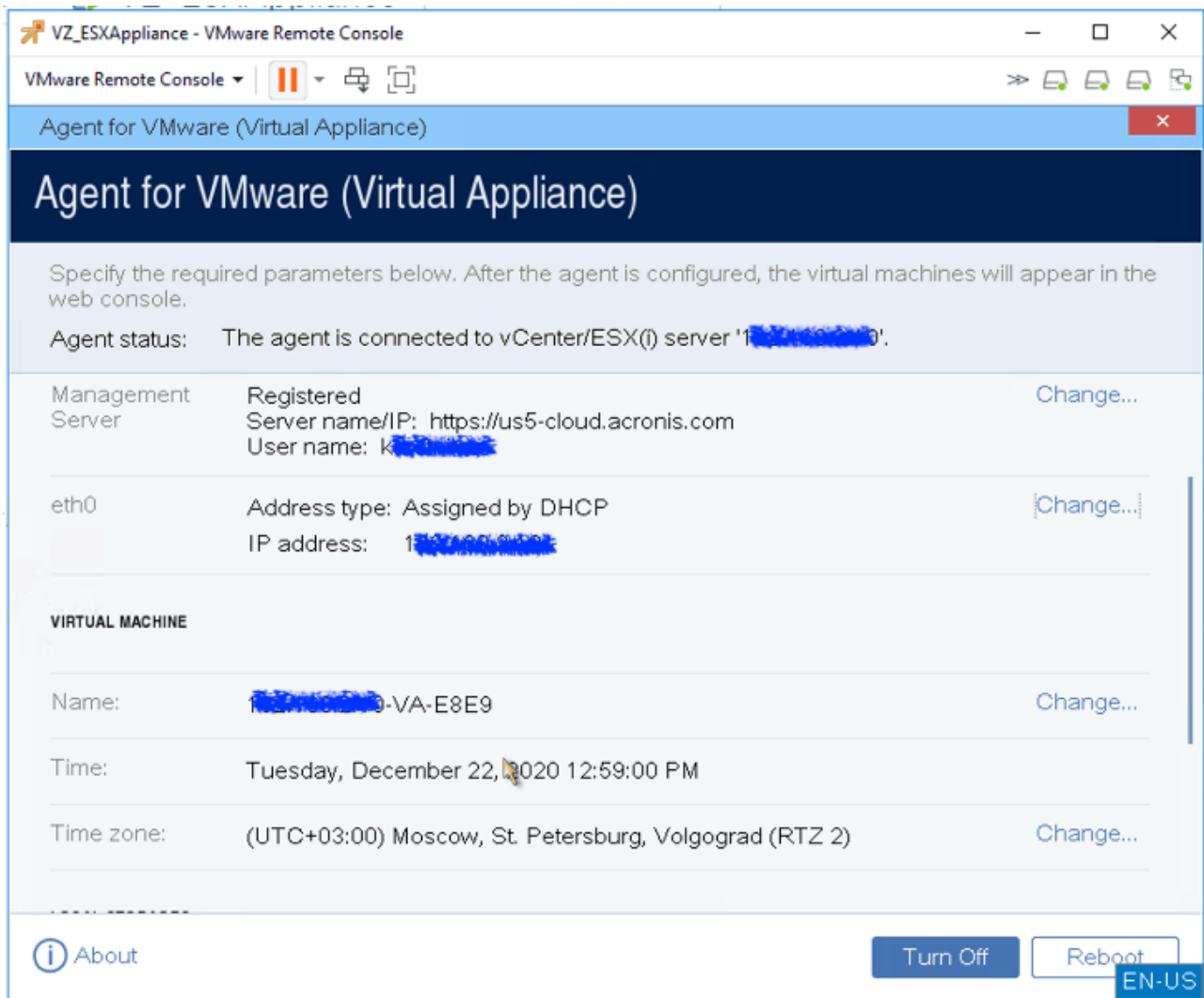
4. Under **AGENT OPTIONS**, in **Management Server**, click **Change**.

In **Server name/IP**, select **Cloud**. The software will display the Cyber Protection service address. Do not change this address unless instructed otherwise.

In **User name** and **Password**, specify the user name and password for the Cyber Protection service. The agent and the virtual machines managed by the agent will be registered under this account.



5. Under **VIRTUAL MACHINE**, in **Time zone**, click **Change**. Select the time zone of your location to ensure that the scheduled operations run at the appropriate time.



- Optionally, you can attach an additional disk to the virtual appliance so the Acronis Agent for VMware can back up to this locally attached storage.

Add the disk by editing the settings of the virtual machine and click **Refresh**. The **Create storage** link will become available. Click this link, select the disk, and then specify a label for it.

## CHAPTER 3

# Deploying the Agent for Virtuoazzo Hybrid Infrastructure from a QCOW2 Template

Such an appliance is a pre-configured virtual machine that you deploy in Virtuoazzo Hybrid Infrastructure. It contains a protection agent that enables you to administer cyber protection of all virtual machines in a Virtuoazzo Hybrid Infrastructure cluster.

Before you proceed to deploy one or more agents, take note of the following:

- **Agent system requirements.**

When deploying the agent virtual appliance(s), you can choose between different predefined combinations of vCPUs and RAM, i.e. flavors. You can also create your own flavors.

The medium flavor with 2 vCPUs and 4 GB of RAM is optimal and sufficient for most operations. It is recommended, however, to let an agent have 8 GB of RAM and 4 vCPUs to improve backup performance if the backup traffic exceeds 100 MB/s (in 10 Gbps networks, for example).

- **The number of agents.**

Even though one agent can protect the entire cluster, you can deploy more if you need to distribute the backup traffic bandwidth load.

If you have more than one agent in a cluster, the virtual machines are automatically evenly distributed between the agents, so that each agent manages an equal number of machines.

Automatic redistribution takes place when a load imbalance among the agents reaches 20%. This may happen, for example, when a machine or an agent is added or removed. For example, you may realize

that you need more agents to help with throughput and deploy an additional virtual appliance to the cluster. The management server will assign the most appropriate machines to the new agent. The load on older agents will be reduced. When you remove an agent from the management server, the machines assigned to the agent are distributed among the remaining agents. This, however, will not happen if an agent gets corrupted or is deleted manually from a Virtuozzo Hybrid Infrastructure node. Redistribution will start only after you remove such an agent from the Cyber Protection web interface.

You can view the result of the automatic distribution:

- In the **Agent** column for each virtual machine in the **All devices** section
- In the **Assigned virtual machines** section of the **Details** panel when an agent is selected in **Settings > Agents**
- **Limitations**
  - Virtuozzo Hybrid Infrastructure appliances cannot be deployed remotely.
  - Application-aware backup of virtual machines is not supported.

## 3.1 Configuring Networks in Virtuozzo Hybrid Infrastructure

Before deploying and configuring the virtual appliance, you need to configure networks in Virtuozzo Hybrid Infrastructure.

The network requirements for the agent are:

- The virtual appliance requires at least two network adapters. The actual number may vary depending on the network architecture.
- The virtual appliance must be connected to Virtuozzo networks with the following network traffic types: **Compute API, VM Backup, ABGW Public, VM Public.**

For more information about configuring the networks, see [Requirements for the compute cluster](#) and [Network requirements and recommendations](#) sections in the Virtuozzo Hybrid Infrastructure documentation.

## 3.2 Configuring User Accounts in Virtuozzo Hybrid Infrastructure

To configure the agent appliance, you need a Virtuozzo Hybrid Infrastructure user account. This account must have the Administrator role in the **Default** domain. For more information about users, refer to the [Virtuozzo Hybrid Infrastructure documentation](#). Grant this account access to all projects in the **Default** domain.

To do this, run the following script in the Virtuozzo Hybrid Infrastructure cluster via the OpenStack Command-Line Interface. For more information on how to connect to this interface, refer to the [Virtuozzo Hybrid Infrastructure documentation](#).

```
# su - vstoradmin
# kolla-ansible post-deploy
# exit
# . /etc/kolla/admin-openrc.sh
# openstack --insecure user set --project admin --project-domain Default --domain Default USERNAME
# openstack --insecure role add --domain Default --user USERNAME --user-domain Default compute --in
```

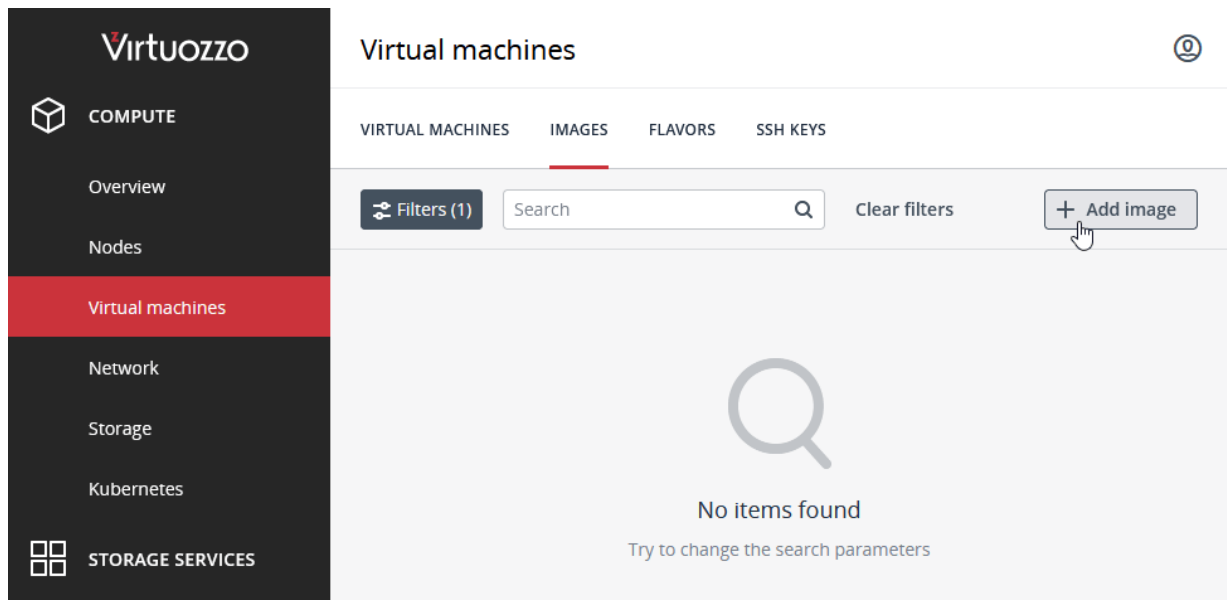
Here, USERNAME is the Virtuozzo Hybrid Infrastructure account with the Administrator role in the **Default** domain. The virtual appliance will use this account in order to back up and restore the virtual machines in any child project under the **Default** domain.

Replace **Default** with the name of another domain to manage backups for virtual machines in that domain.

## 3.3 Creating an Appliance with the Agent for Virtuozzo Hybrid Infrastructure

To create an appliance with the Agent for Virtuozzo Hybrid Infrastructure from a QCOW2 template, do the following:

1. Log in to your Cyber Protection account.
2. Click **Devices > All devices > Add > Virtuozzo Hybrid Infrastructure**. The ZIP archive will be downloaded to your machine. Unpack it to get the QCOW2 template.
3. Log in to your Virtuozzo Hybrid Infrastructure account.
4. Add the QCOW2 image file to the Virtuozzo Hybrid Infrastructure compute cluster:
  - 4.1. On the **Compute > Virtual machines > Images** tab, click **Add image**.



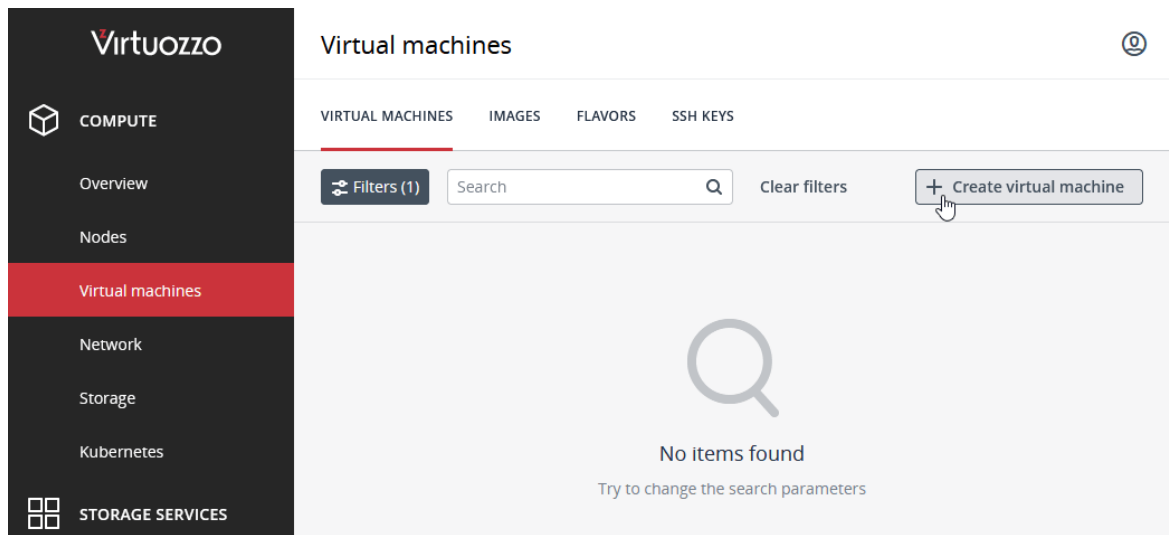
4.2. In the **Add image** window, click **Browse**, and then select the QCOW2 file.

4.3. Specify the image name, select the **Generic Linux** OS type, and then click **Add**.

The 'Add image' dialog window is shown. It has a title bar with 'Add image' and a close button. The form contains three input fields: 'Image file' with the value 'VHIAppliance.qcow2' and a 'Browse' button; 'Name' with the value 'VHIAppliance.qcow2'; and 'Select OS distribution' with a dropdown menu showing 'Generic Linux'. Below these is a checkbox labeled 'Share between all projects' which is currently unchecked. At the bottom right are 'Cancel' and 'Add' buttons.

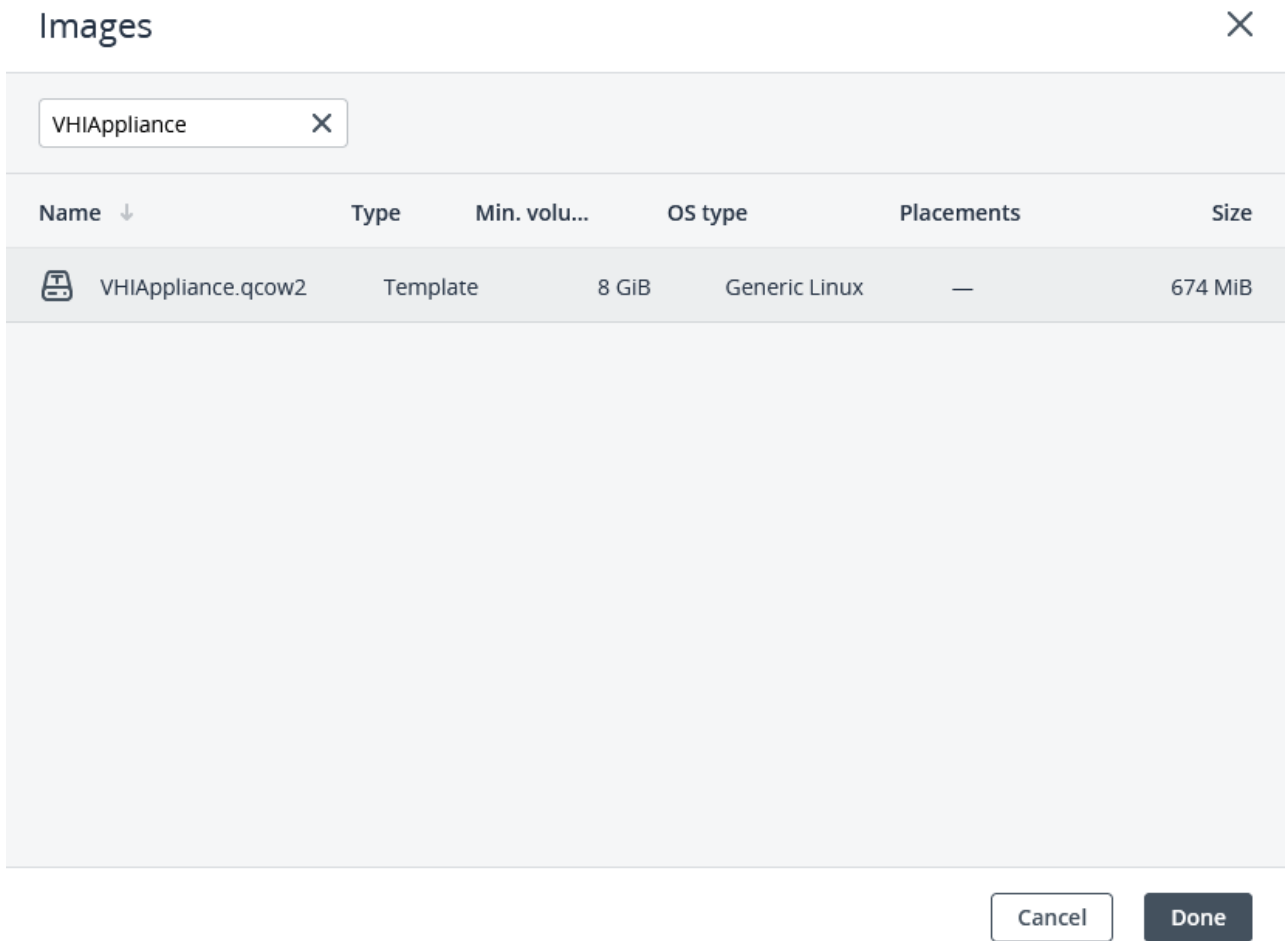


5. In the **Compute > Virtual machines > Virtual machines** tab, click **Create virtual machine**.



A window will open where you will need to specify a name for the new virtual machine.

6. In **Deploy from**, choose **Image**.
7. In the **Images** window, select the QCOW2 image file of the appliance, and then click **Done**.



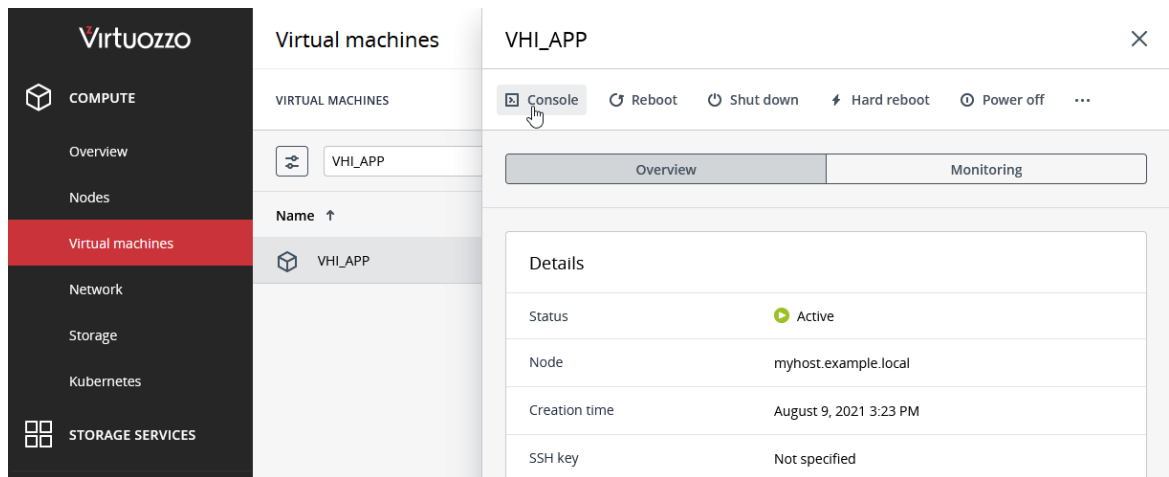
8. In the **Volumes** window, do not add any volumes. The volume that is added automatically for the system disk is sufficient.
9. In the **Flavor** window, choose a desired combination of vCPUs and RAM, and then click **Done**. See the agent system requirements in [Deploying the Agent for Virtioozzo Hybrid Infrastructure from a QCOW2 Template](#).
10. In the **Network interfaces** window, click **Add**, select a **public** virtual network, and then click **Add**. It will appear in the **Network interfaces** list.  
  
If you use a setup with more than one physical network (and thus with more than one public virtual network), repeat this step and select the virtual networks that you need.
11. Click **Done**.
12. Back in the **Create virtual machine** window, click **Deploy** to create and boot the virtual machine.

## 3.4 Configuring the Agent for Virtuozzo Hybrid Infrastructure

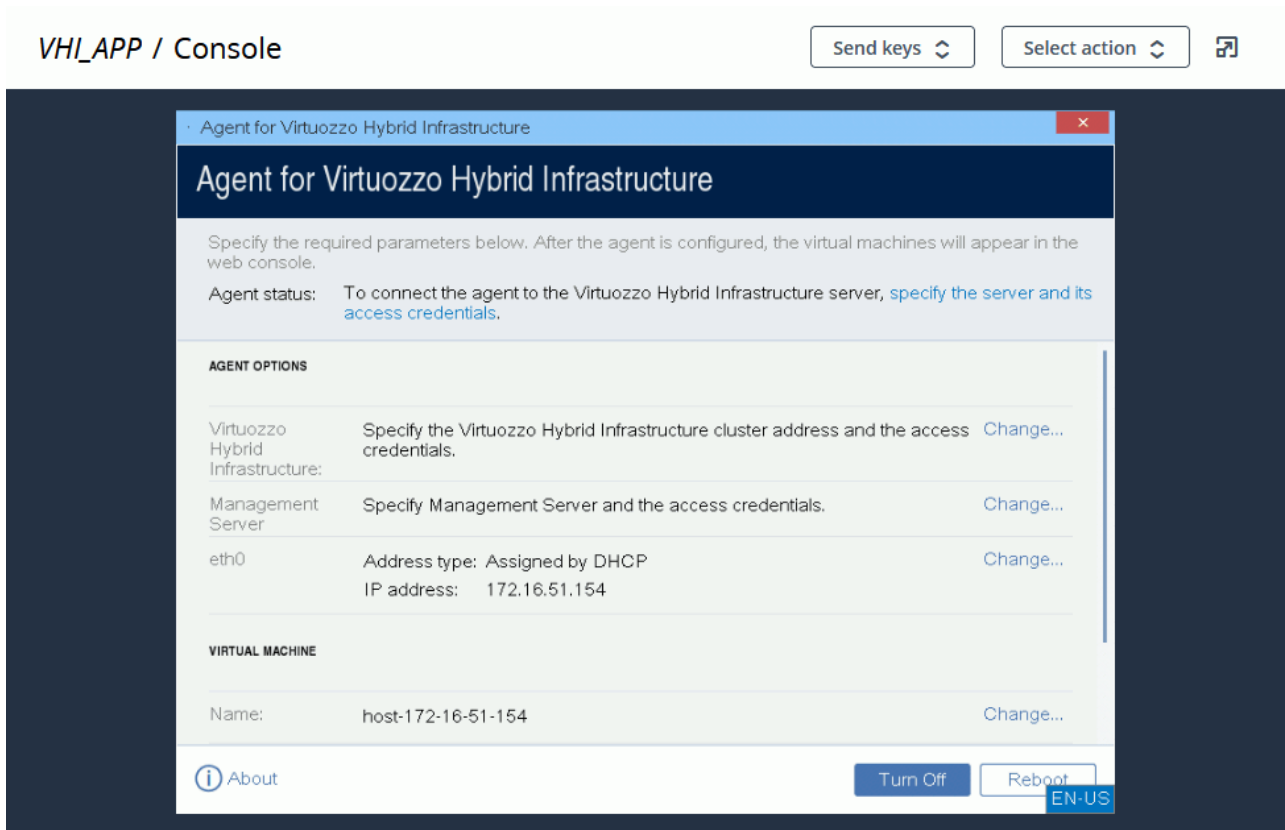
After creating the agent appliance, you need to configure it so that it can reach both the Virtuozzo Hybrid Infrastructure cluster that it will protect and the Cyber Protection cloud service.

To configure the virtual appliance:

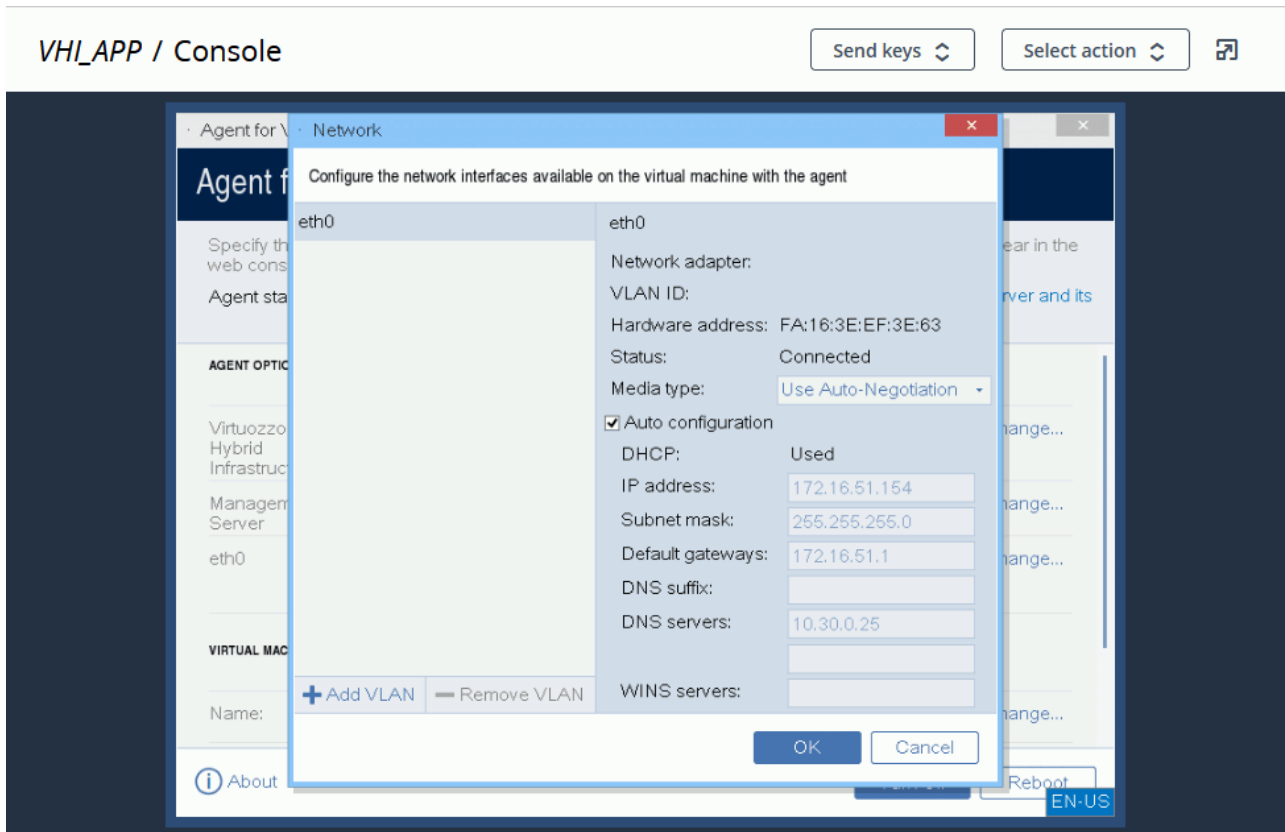
1. Log in to your Virtuozzo Hybrid Infrastructure account.
2. On the **Compute > Virtual machines > Virtual Machines** tab, select the virtual machine that you created. Then, click **Console**.



The console to the appliance virtual machine will open.

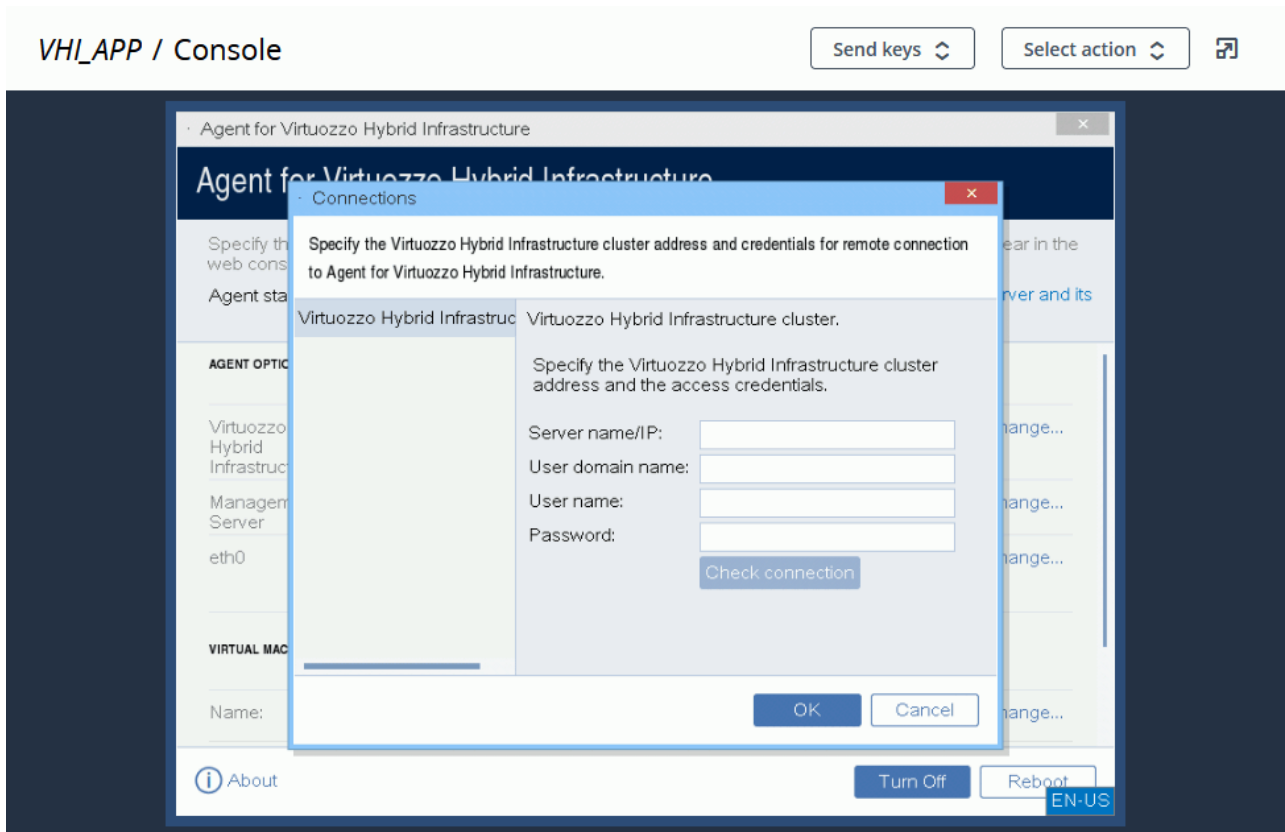


3. Configure the network interfaces of the appliance. There may be one or more interfaces to configure, it depends on the number of virtual networks that the appliance uses. Ensure that automatically assigned DHCP addresses (if any) are valid within the networks that your virtual machine uses, or assign them manually.

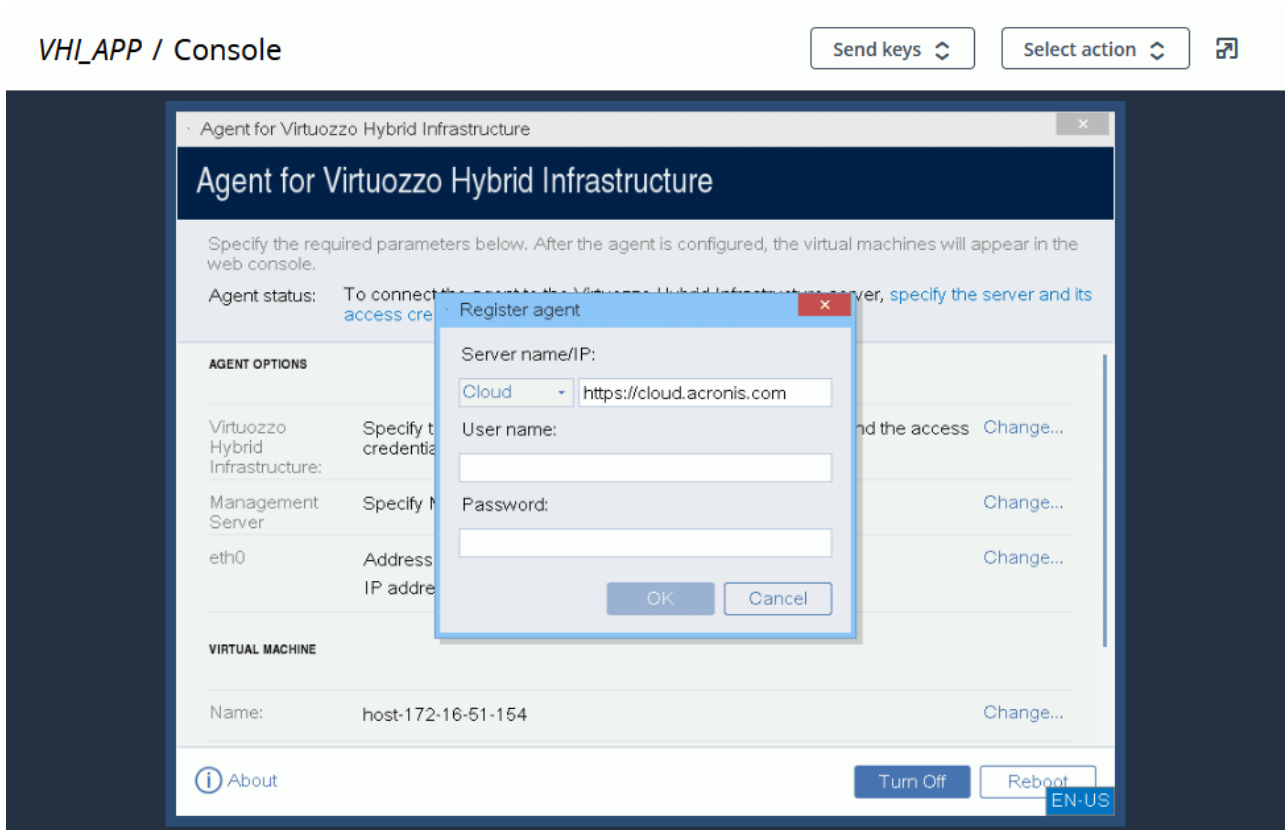


#### 4. Specify the Virtuozzo cluster address and credentials:

- The DNS name or IP address of the Virtuozzo Hybrid Infrastructure cluster. This is the address of the cluster's management node. The default port 5000 will be automatically set. If you use a different port, specify it manually.
- In the **User domain name** field, specify your domain in Virtuozzo Hybrid Infrastructure. For example, **Default**. The domain name is case-sensitive.
- In the **User name** and **Password** fields, enter the credentials for the Virtuozzo Hybrid Infrastructure user account with the **Administrator** role in the specified domain. For more information about users, roles, and domains, refer to the [Virtuozzo Hybrid Infrastructure documentation](#).



5. Specify the Cyber Protection management server address and credentials for accessing it.



## CHAPTER 4

# Migrating Virtual Machines

Migrating virtual machines from VMware vSphere to Virtuozzo Hybrid Infrastructure involves two major steps:

1. Backup the virtual machines.
2. Recover them to Virtuozzo Hybrid Infrastructure.

These steps are described in detail in the next sections.

## 4.1 Backing Up Virtual Machines

To backup virtual machines, you will need to:

- Remove VMware Tools and install [Virtuozzo Guest Tools](#) in the virtual machines.
- Create a protection plan with the **Backup** module enabled. It is a set of rules that specify how the given data will be protected on a given machine. A protection plan can be applied to multiple machines at the time of its creation, or later.

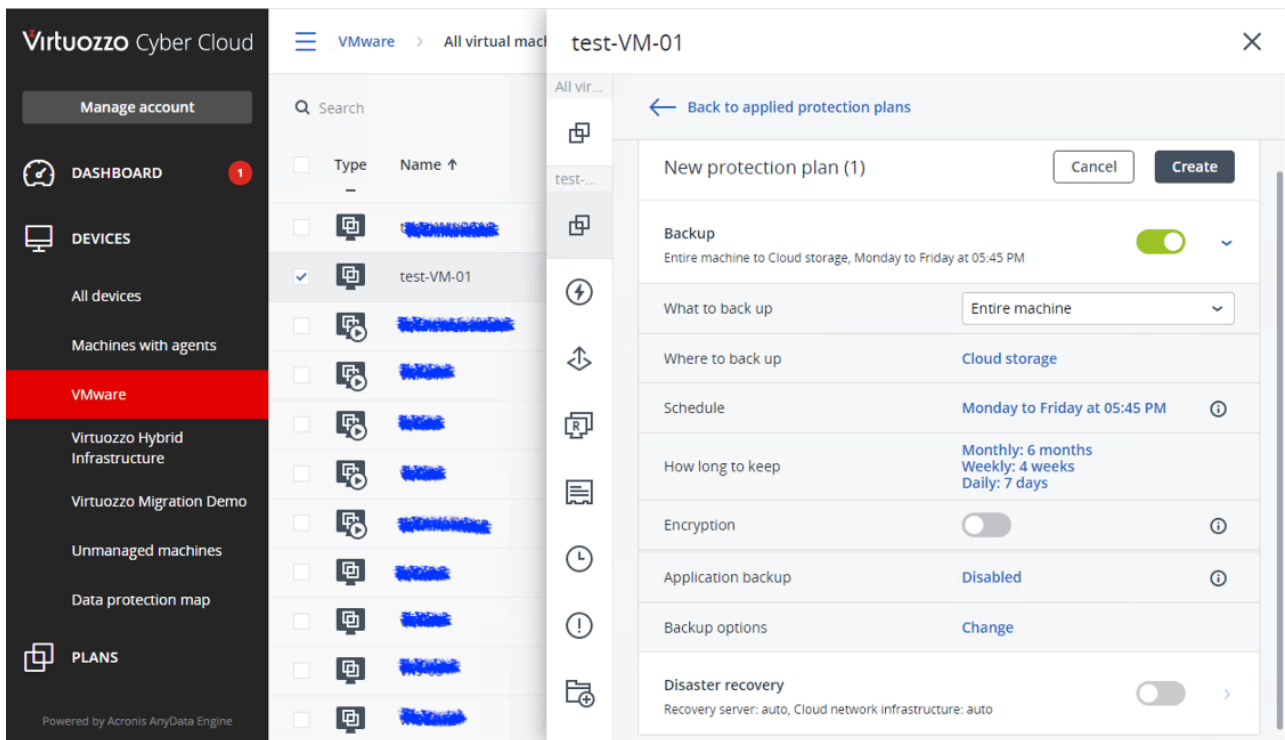
To create the first protection plan with the **Backup** module enabled, select the machines that you want to back up and click **Protect**.

The software will display protection plans that are applied to the machine. If the machine does not have any plans assigned to it, you will see the default protection plan that can be applied. You can adjust the settings as needed and apply this plan or create a new one.

To create a new plan:

1. Click **Create plan**. Enable the **Backup** module and unroll the settings.

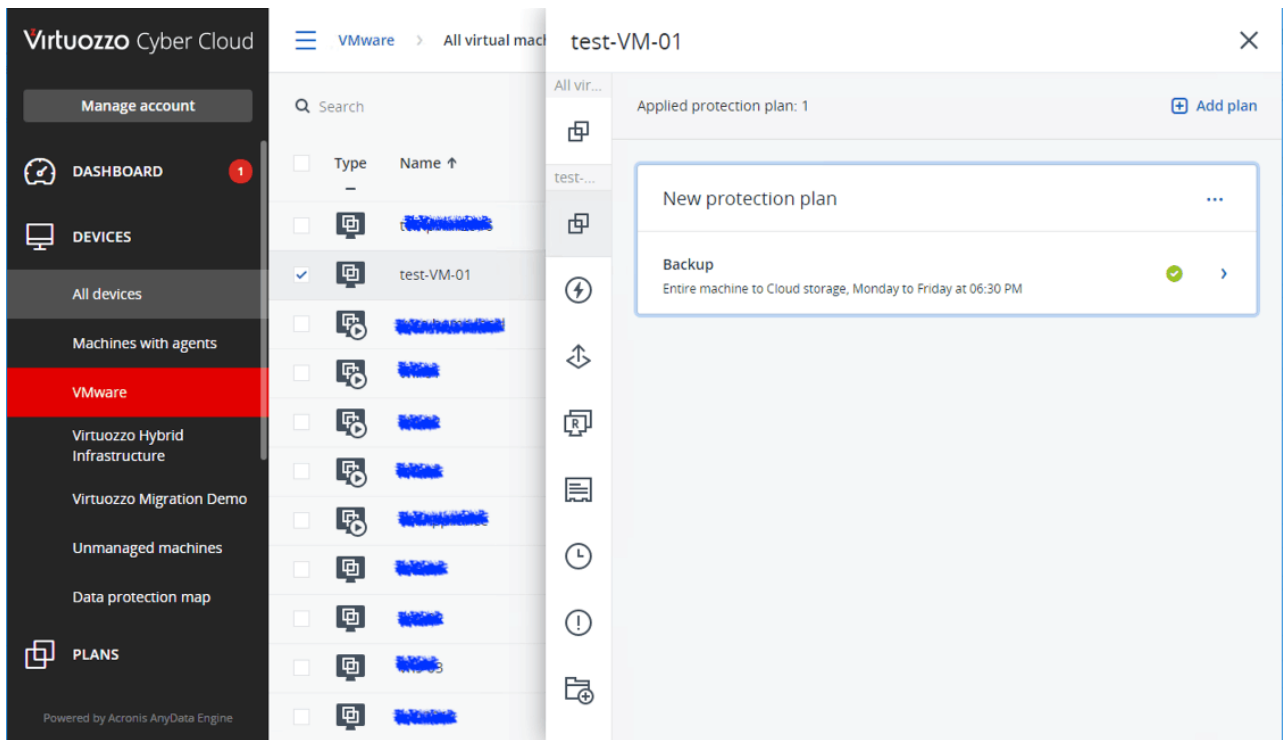




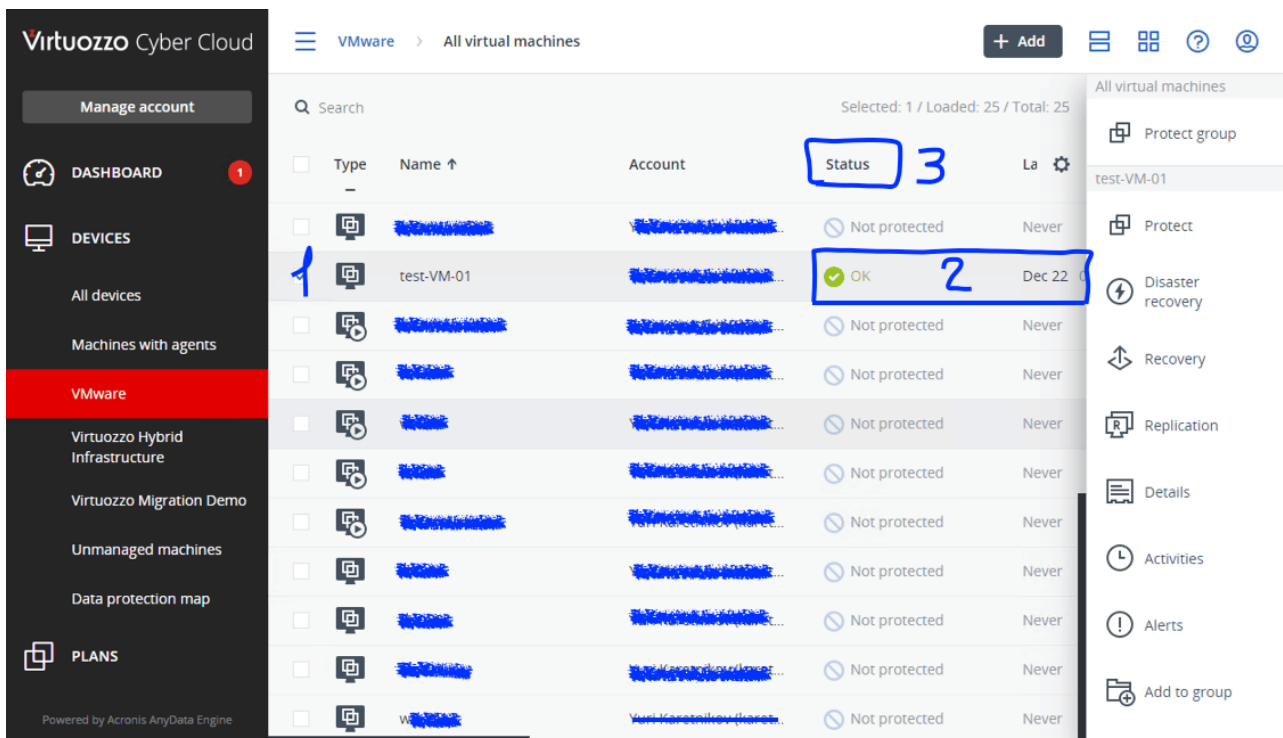
2. (Optional) To modify the protection plan name, click the default name.
3. (Optional) To modify the **Backup** module parameters, click the corresponding setting of the protection plan panel.
4. (Optional) To modify the backup options, click **Change** next to them.
5. Click **Create**.

To apply an existing protection plan:

1. Select the machines that you want to back up and click **Protect**. If a common protection plan is already applied to the selected machines, click **Add plan**. The software will display the previously created protection plans.



2. Select a protection plan to apply.
3. Click **Apply** and wait until the backup procedure is complete.



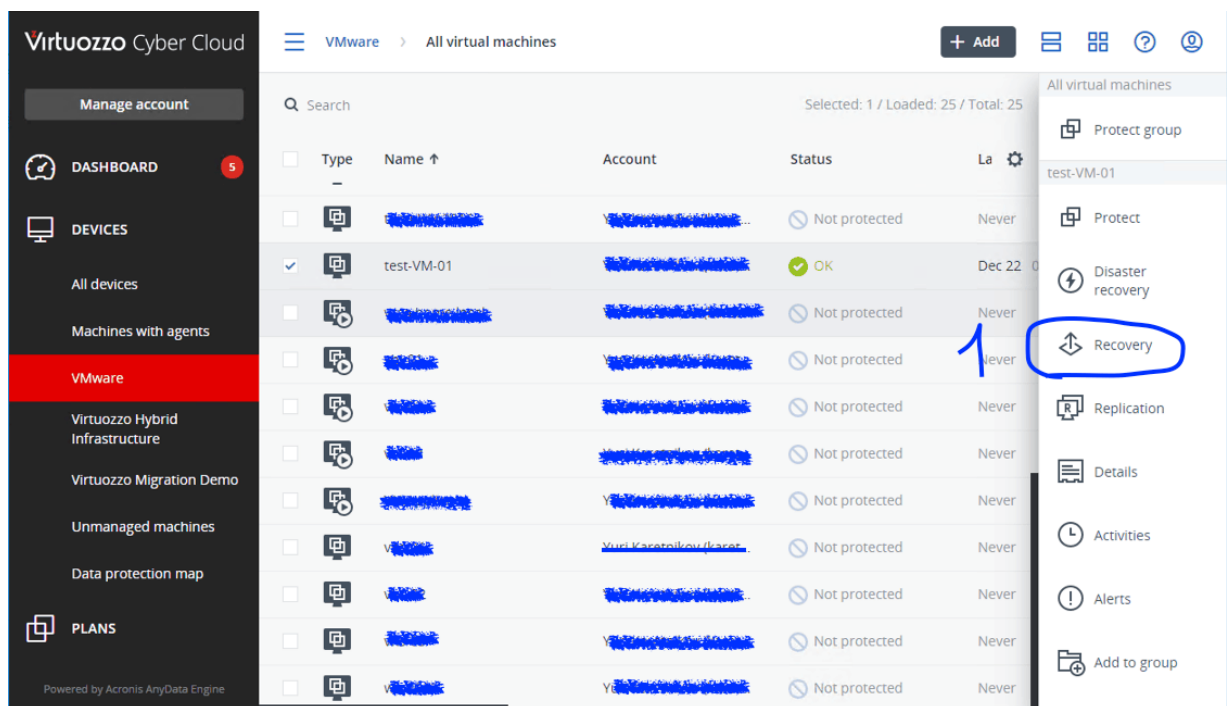
## 4.2 Recovering Virtual Machines

To complete migration, virtual machines need to be recovered from their backups to the desired location.

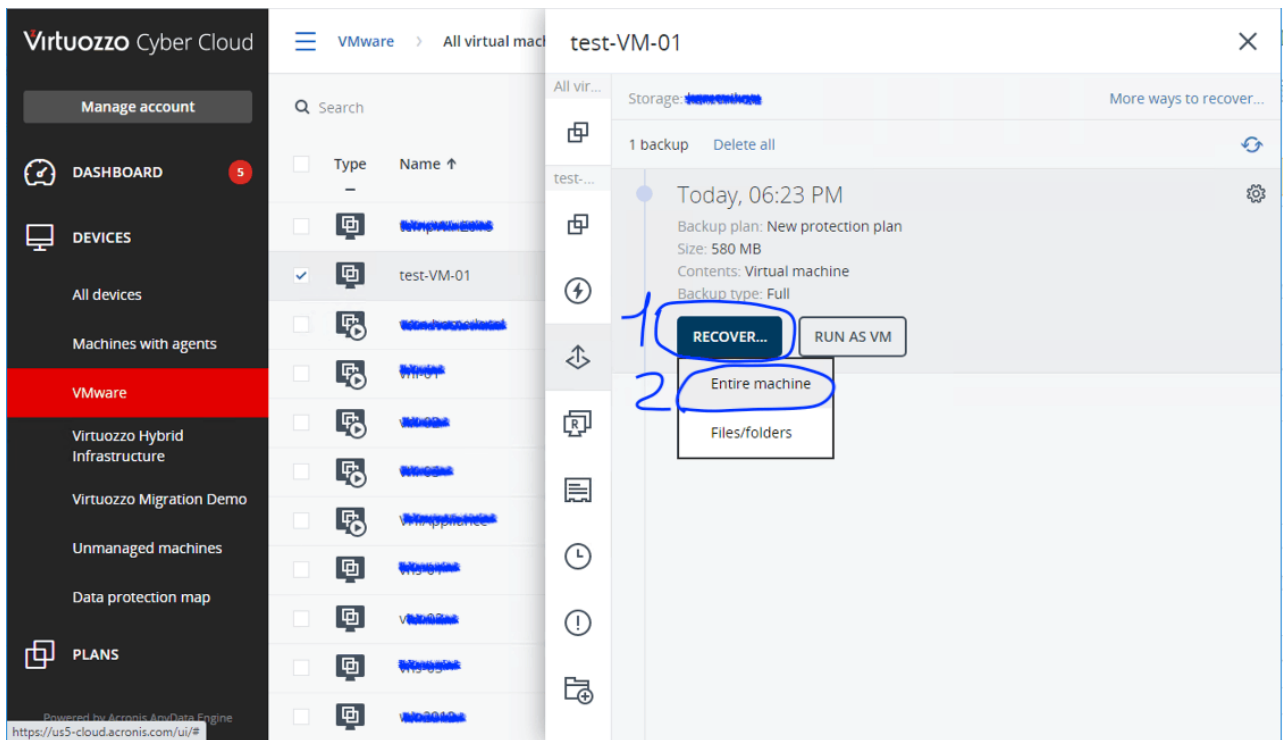
One prerequisite is that a virtual machine must be stopped during recovery. By default, the software stops the machine without a prompt. When the recovery is completed, you have to start the machine manually. You can change the default behavior by using the VM power management recovery option (**Recovery options > VM power management**).

To recover a VM to a desired location:

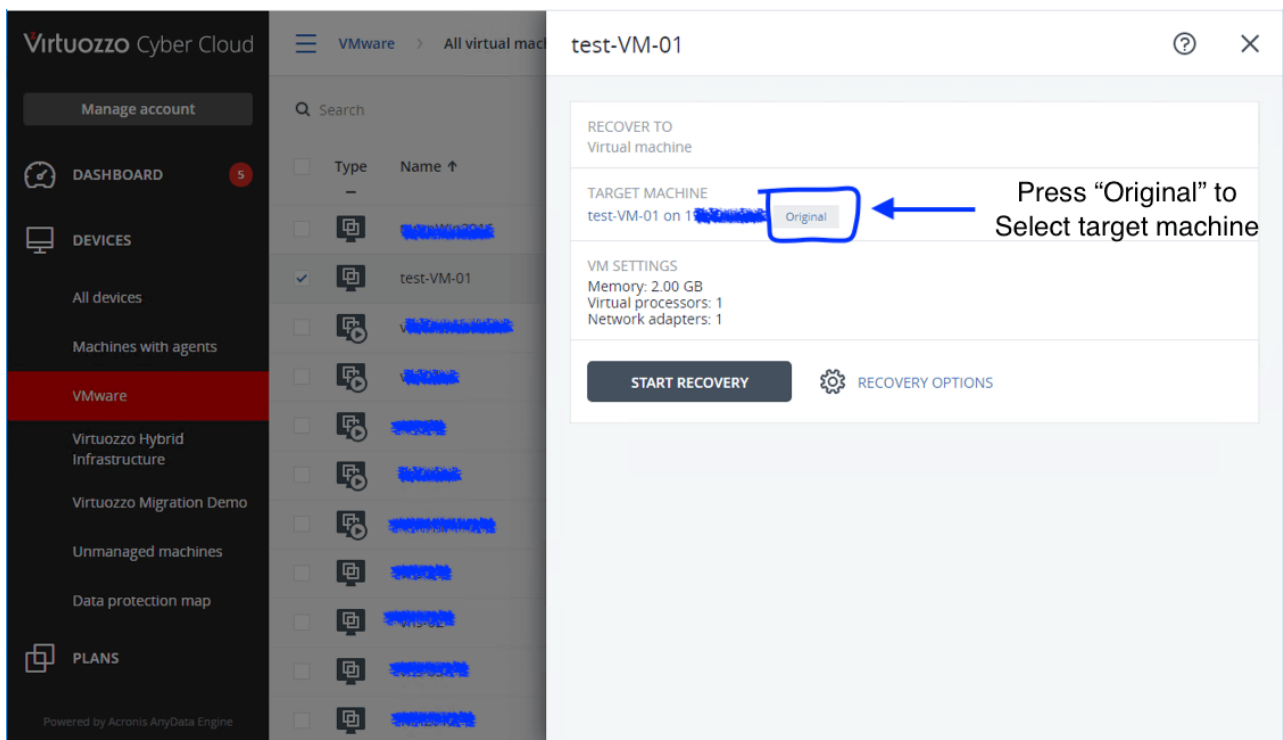
1. Do one of the following:
  - Select a backed-up machine, click **Recovery**, and then select a recovery point.



- Select a recovery point on the **Backup storage** tab.
2. Click **Recover > Entire machine**.

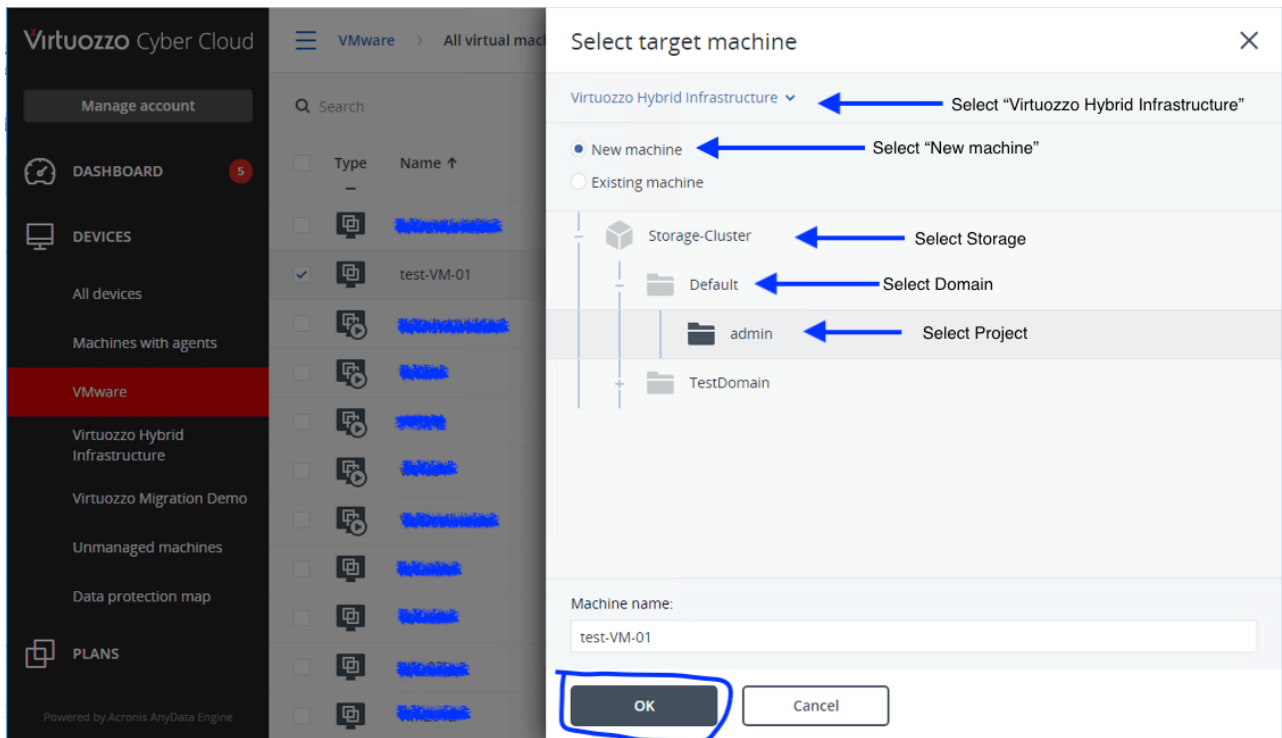


By default, the software automatically selects the original machine as the target machine.

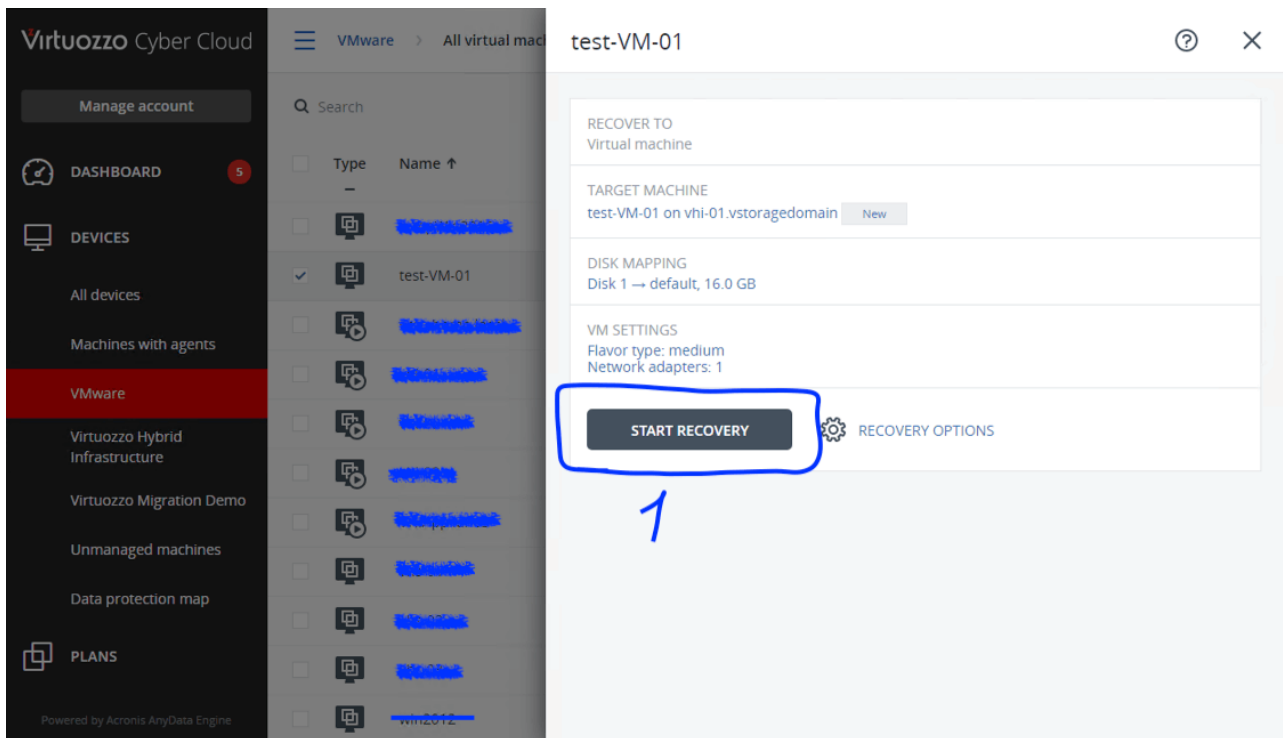


To recover to another virtual machine, click **Target machine**, and then do the following:

- 2.1. Select the hypervisor **Virtuozzo Hybrid Infrastructure**.
- 2.2. Select whether to recover to a new or existing machine.
- 2.3. Select the storage, domain, project and specify the new machine name, or select an existing target machine.
- 2.4. Click **OK**.

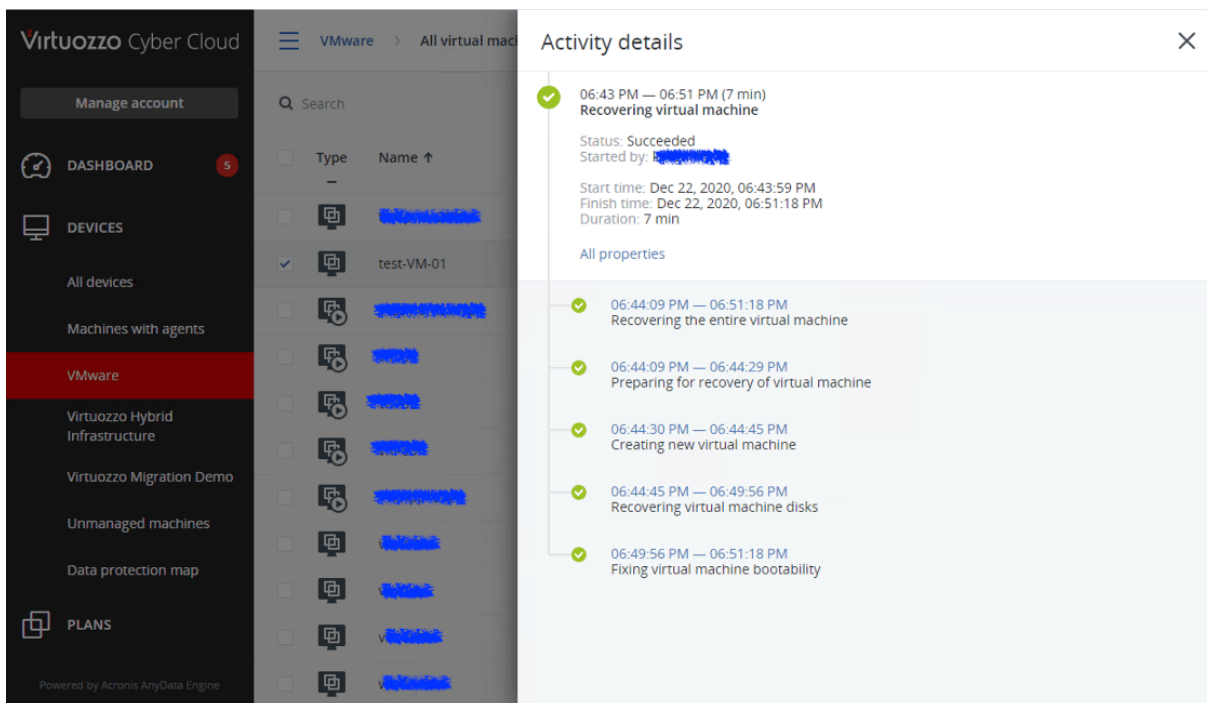


3. Set up the additional recovery options if needed.
4. Click **Start recovery**.



5. When recovering to an existing virtual machine, confirm that you want to overwrite the disks.

The recovery progress is shown on the **Activities** tab.



After a successful migration, you will see your VM in Virtuozzo Hybrid Infrastructure.

**Virtuozzo**

**Virtual machines**

VIRTUAL MACHINES IMAGES FLAVORS SSH KEYS

Filters Search + Create virtual machine

	Name ↑	Status ↓	IP address	vCPUs ↓	RAM ↓	S	
<input type="checkbox"/>	test-VM-01	Shut down		2	4 GiB	0	...
<input type="checkbox"/>	VHL_vAPP	Active		1	2 GiB	8	...